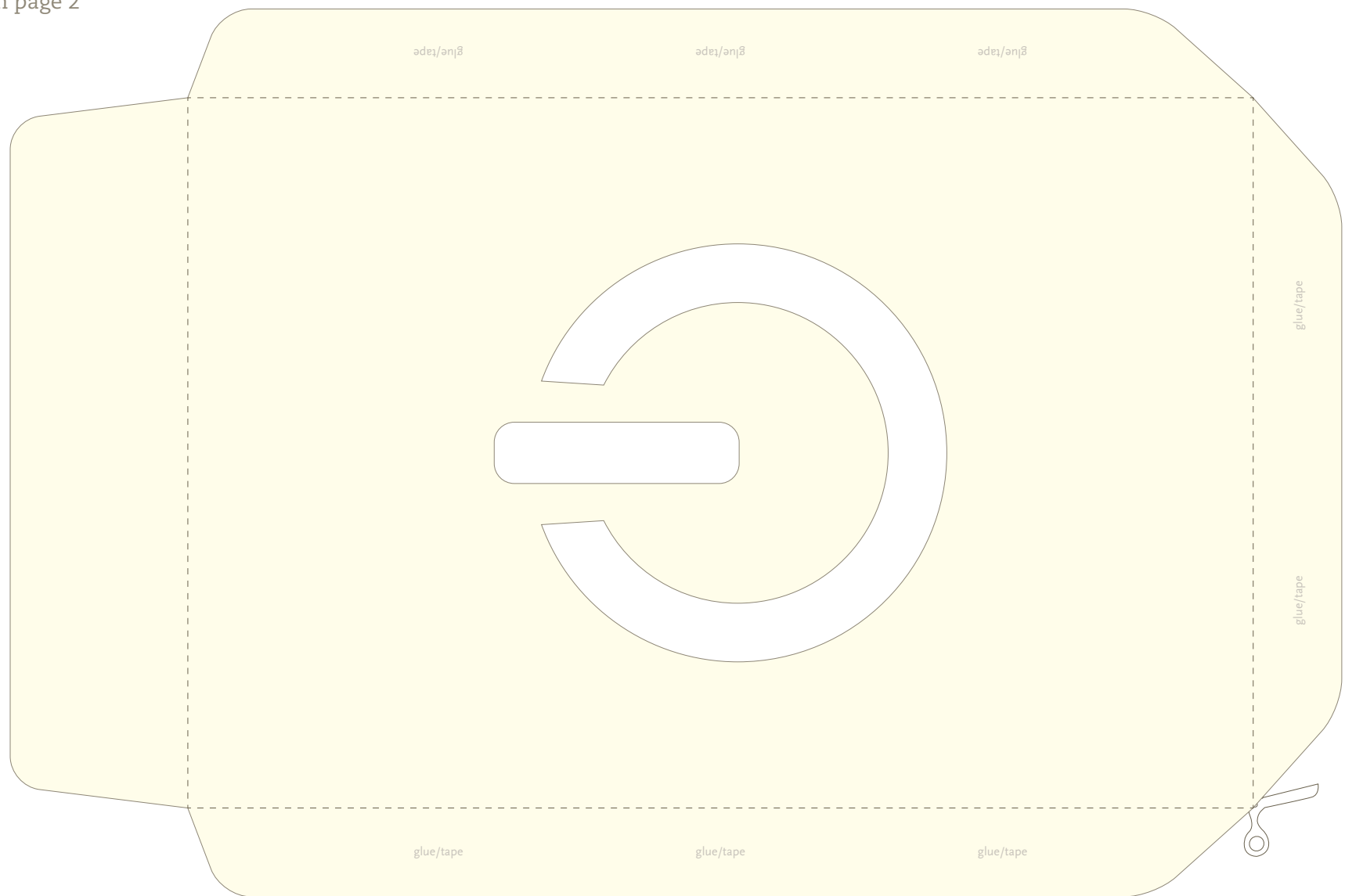


Paper Skin

Large . Power . Front

See instructions on page 2



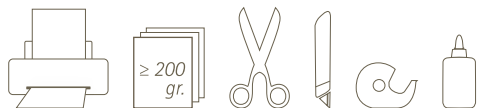
Paper Skin

Large . Power . Back

What is it

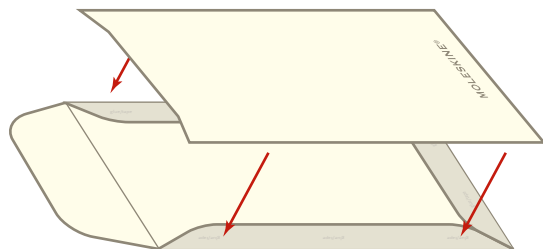
Paper Skin is an envelope you can use to insert the new Moleskine Postal notebooks or Note cards in order to personalize your messages, greetings, invitations, ideas, thoughts.

You may need



How to build it

- 1 Print the pdf file
- 2 Cut it along the solid lines ———
- 3 Bend it on the dashed lines - - - - -
- 4 Bend the flaps of the “Front” and attach them to the “Back” of the envelope with glue or double-sided adhesive tape



MOLESKINE®