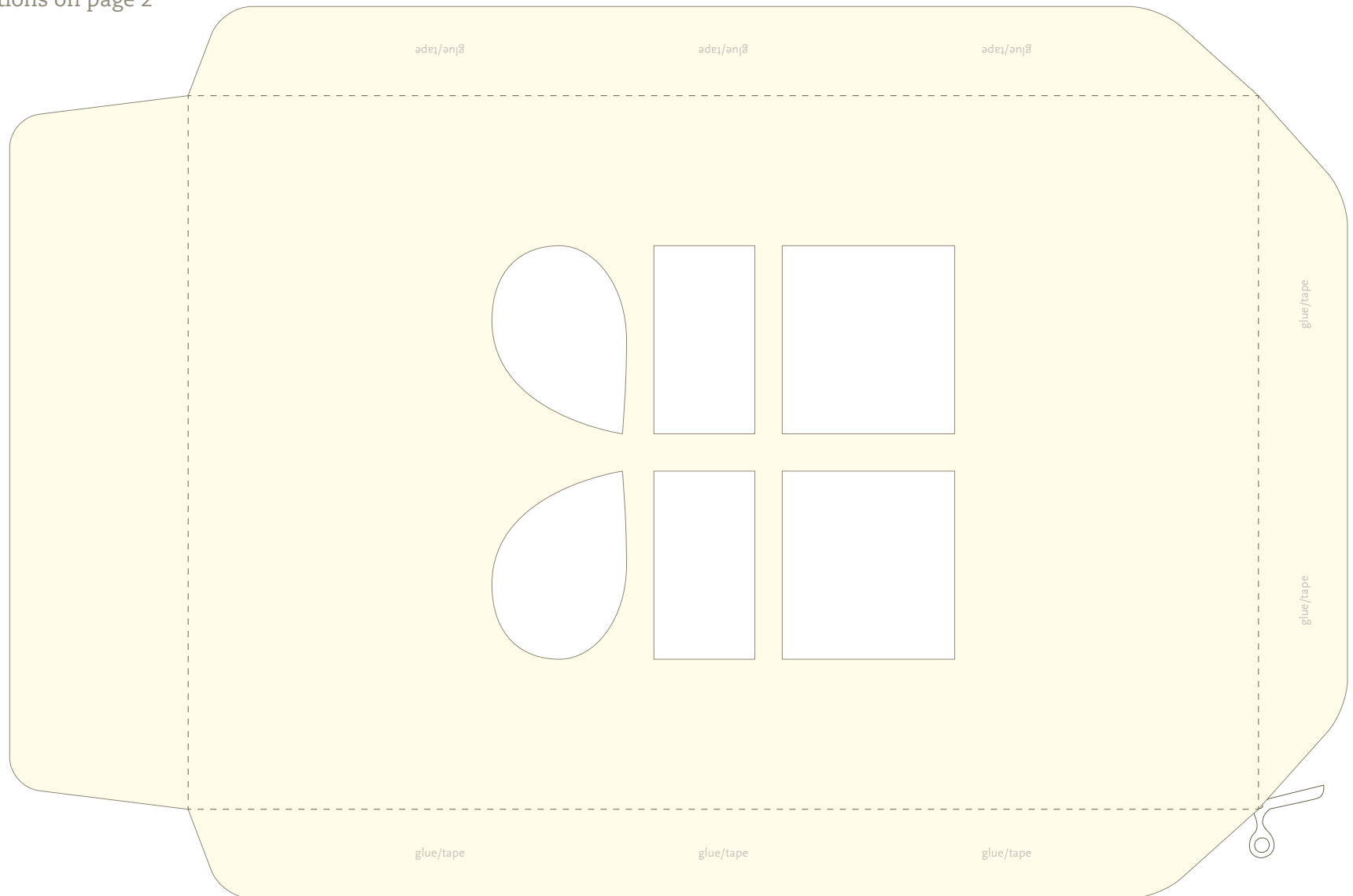


# Paper Skin

## Large . Gift . Front

See instructions on page 2



# Paper Skin

## Large . Gift . Back

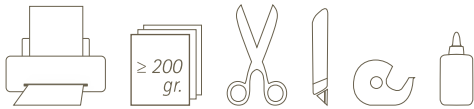
### What is it

---

Paper Skin is an envelope you can use to insert the new Moleskine Postal notebooks or Note cards in order to personalize your messages, greetings, invitations, ideas, thoughts.

### You may need

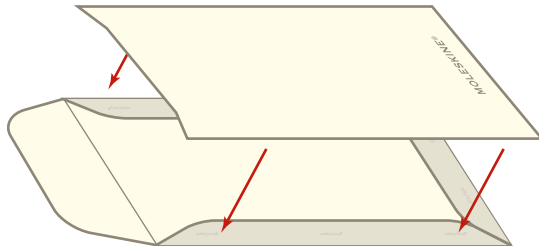
---



### How to build it

---

- 1 Print the pdf file
- 2 Cut it along the solid lines ———
- 3 Bend it on the dashed lines - - - - -
- 4 Bend the flaps of the “Front” and attach them to the “Back” of the envelope with glue or double-sided adhesive tape



MOLESKINE®