

M.Use Box

Instructions



What is it

The M.Use Box is a pencil box that helps you become a better writer, painter and composer.

It is a hexagonal pyramid you can use to store pens, pencils and browser. It's also a great boost for your ideas. It shows a set of instructions meant to guide you through your everyday creative process - be it writing, drawing or composing.

Build it, place it on your table and have a look at it every now and then. You will never be short of ideas, or pens, again.

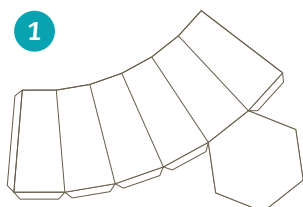
How to build it

Download the M.Use Box file and print it.

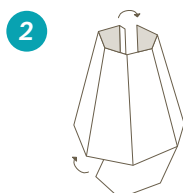
Don't waste time cursing your printer because it's making strange noises. Instead, get a hold of some scissors, glue, and a ruler if you have one.

Once you have printed the page, cut it along the full lines, fold on the dotted lines, and attach the flaps with the glue following the natural shape of the M.Use Box.

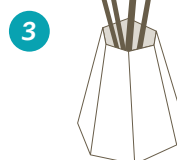
In no longer than 10 minutes you should have your M.Use Box ready.



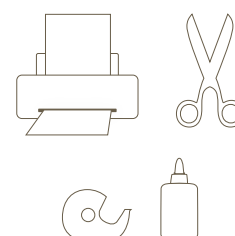
Cut along the full lines and bend on the dotted lines.



Attach the flaps and the base with the glue.



Your M.Use Box is ready!



You may need

How to personalize and share it

Did you get excited and now you want to make your own M.Use Box? Brilliant, you are one of us.

Download the file Blank Box and print it. On the first face on the left, write down your title. Something like: "How to build a house", "How to make a dress", "How to plan a trip", "How to grow a plant" or "How to make a friend happy". Then think of a set of five instructions and write one of them on each of the faces that are still blank, excluding the base.

Now you can build the box as explained in the paragraph above and put it on your table, or give it as a present to someone you like. Whatever you want to do with it, first take a photo of your box and upload it on myMoleskine page at www.moleskine.com/mymoleskine, so that you can be a real muse for our community.